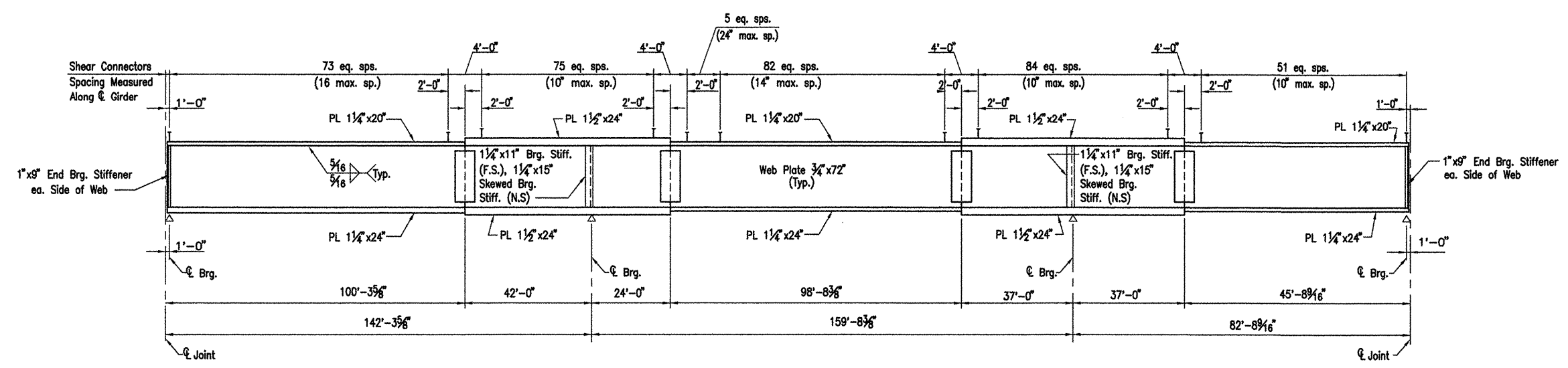
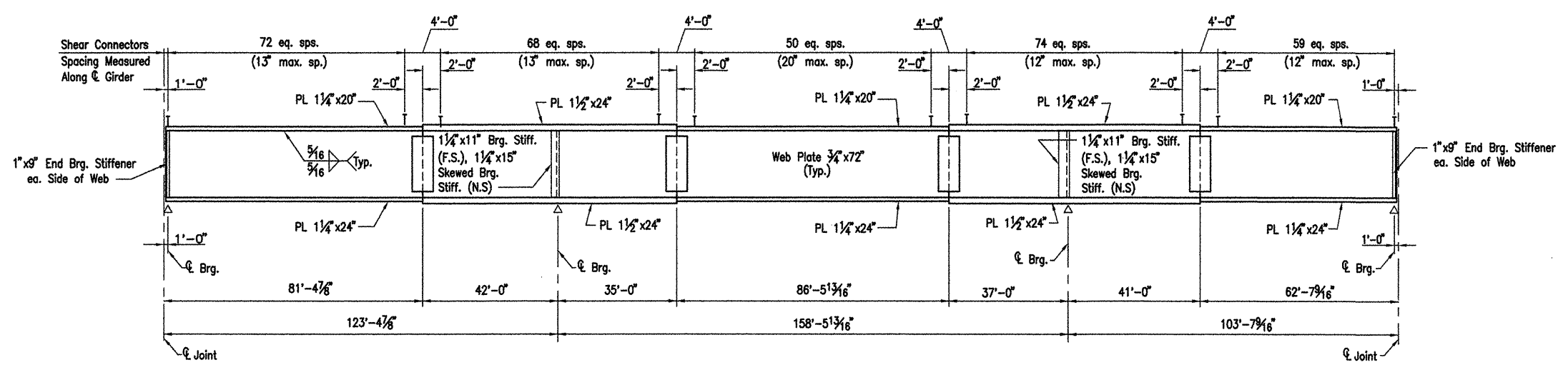


DATE REVISED	DATE FILMED	DATE REVISED	DATE FILMED	FED. ROAD NO.	STATE	FED. AID PROJ. NO.	SHEET NO.	TOTAL SHEETS
					ARK.			
						JOB NO.	110395	23 203
						06830	386' UNIT	47087

Note: Girders are curved and concentric to C of Bridge.



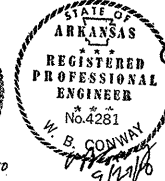
GIRDER ELEVATION UNIT 1 (GIRDER 1)  
N.T.S.



GIRDER ELEVATION UNIT 1 (GIRDER 2)  
N.T.S.

LEGEND:  
N.S. = Near Side  
F.S. = Far Side

- NOTES:
- All Steel To Be AASHTO M270, GR.50W.
  - See Dwg. No. 47085 For General Notes.
  - See Dwg. No. 47089 For Bearing Stiffener Details.
  - See Dwg. No. 47102 - 47103 For Bearing Details.
  - See Dwg. No. 47086 For Splice & Shear Connector Details.
  - See Dwg. Nos. 47095 to 47097 For Expansion Details.
  - Bolted Field Splices Shown May Be Eliminated Or Shop Welded Splices May Be Substituted With Approval Of The Bridge Engineer. Payment Will Be Made On The Basis Of The Bolted Splices Shown.



ALTERNATE NO. 1 & 2  
CONT. COMP. PLATE GIRDER UNIT  
(SHEET 3 OF 11)

WHITE RIVER STR. & APPRS.  
(CLARENDON) (PH III) (F)  
MONROE COUNTY

ROUTE 79 SEC. 13

ARKANSAS STATE HIGHWAY COMMISSION  
LITTLE ROCK, ARK.

Engstrom/Modjeski and Masters, Inc.

DRAWN BY: CJA/JDB DATE: Sep. 10 FILENAME: b11039514\_s03  
CHECKED BY: WBC DATE: Sep. 10 SCALE: 1"=10'-0"  
DESIGNED BY: GPT DATE: Sep. 10  
BRIDGE NO. 06830 DRAWING NO. 47087

BRIDGE ENGINEER

COMPANY\1999 JOBS\99-044 AHTD\WHITERIVER\JOB 110395\386 StDet01 ACAD SCALE: 1"=10'-0"